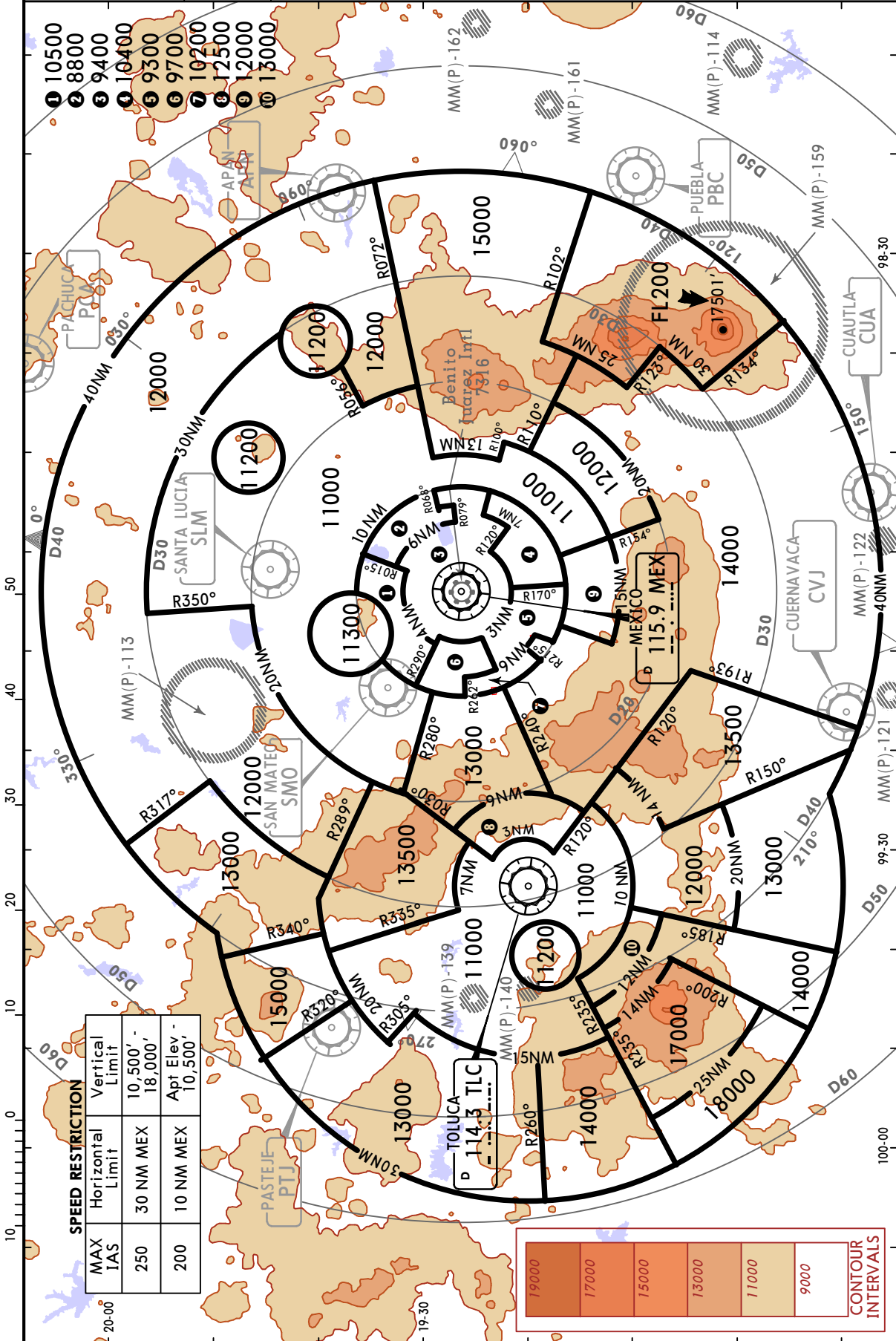


MEXICO Terminal (R) Apt Elev 129.6 7316'

Alt Set: MB (IN on req) Trans level: FL 195 Trans alt: 18500'

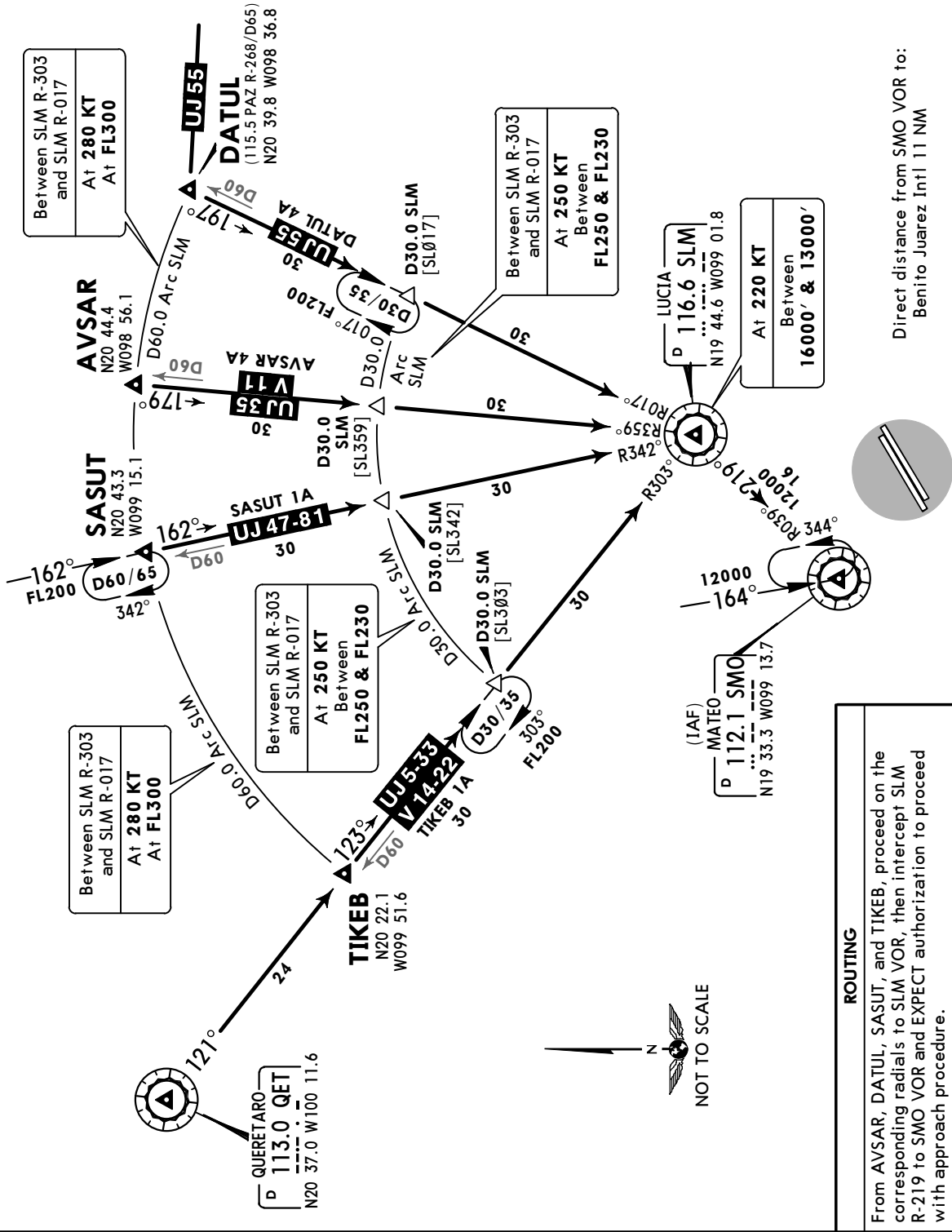
1. These MVAs are the lowest altitudes that can be assigned by the controller in a sector when RADAR control procedures (vectors) are applied, without affecting routes and procedures with lower minimums.
2. Numerous prohibited areas within 15 NM of airport.



CHANGES: Navaid naming convention.

<p>D-ATIS 127.65</p>	<p>Apt Elev 7316'</p>	<p>Alt Set: IN (MB on req) Trans level: FL195 Trans alt: 18500'</p> <ol style="list-style-type: none"> 1. These arrival instructions can be changed in accordance with ATC instructions by means of RADAR vectors and/or speed changes. 2. If due to aircraft performance your aircraft cannot adjust to the speed and/or altitude restrictions, please inform ATC as soon as possible so that the proper aircraft separation can be maintained.
--------------------------	---------------------------	--

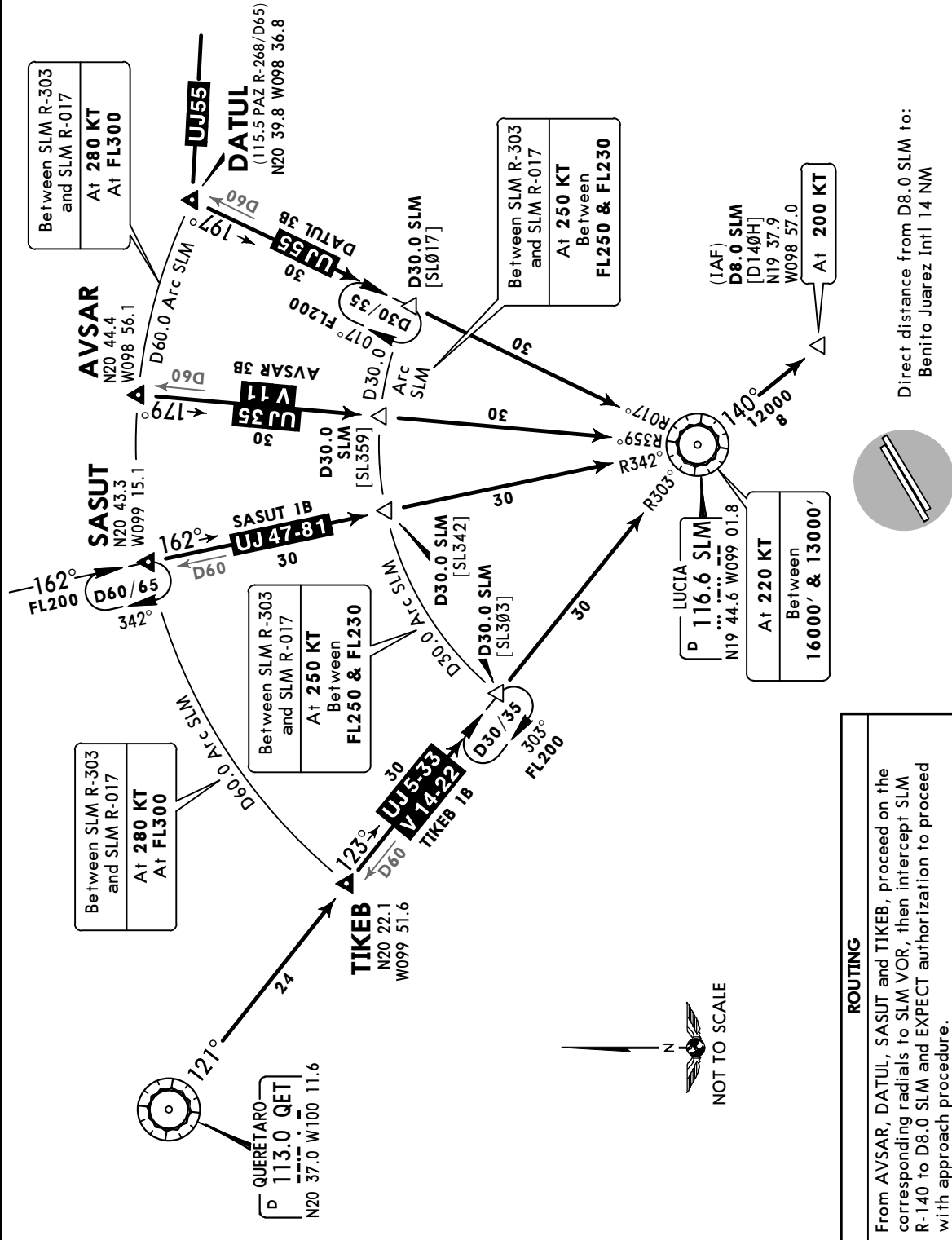
AVSAR 4A (AVSAR4A) [AVSA4A]
 DATUL 4A (DATUL4A) [DATU4A]
 SASUT 1A (SASUT1A) [SASU1A]
 TIKEB 1A (TIKEB1A) [TIKE1A]
 (RWYS 05L/R)



CHANGES: Procedures renamed, revised.

<p>D-ATIS 127.65</p>	<p>Apt Elev 7316'</p>	<p>Alt Set: IN (MB on req) Trans level: FL195 Trans alt: 18500'</p> <p>1. These arrival instructions can be changed in accordance with ATC instructions by means of RADAR vectors and/or speed changes.</p> <p>2. If due to aircraft performance your aircraft cannot adjust to the speed and/or altitude restrictions, please inform ATC as soon as possible so that the proper aircraft separation can be maintained.</p>
--------------------------	---------------------------	---

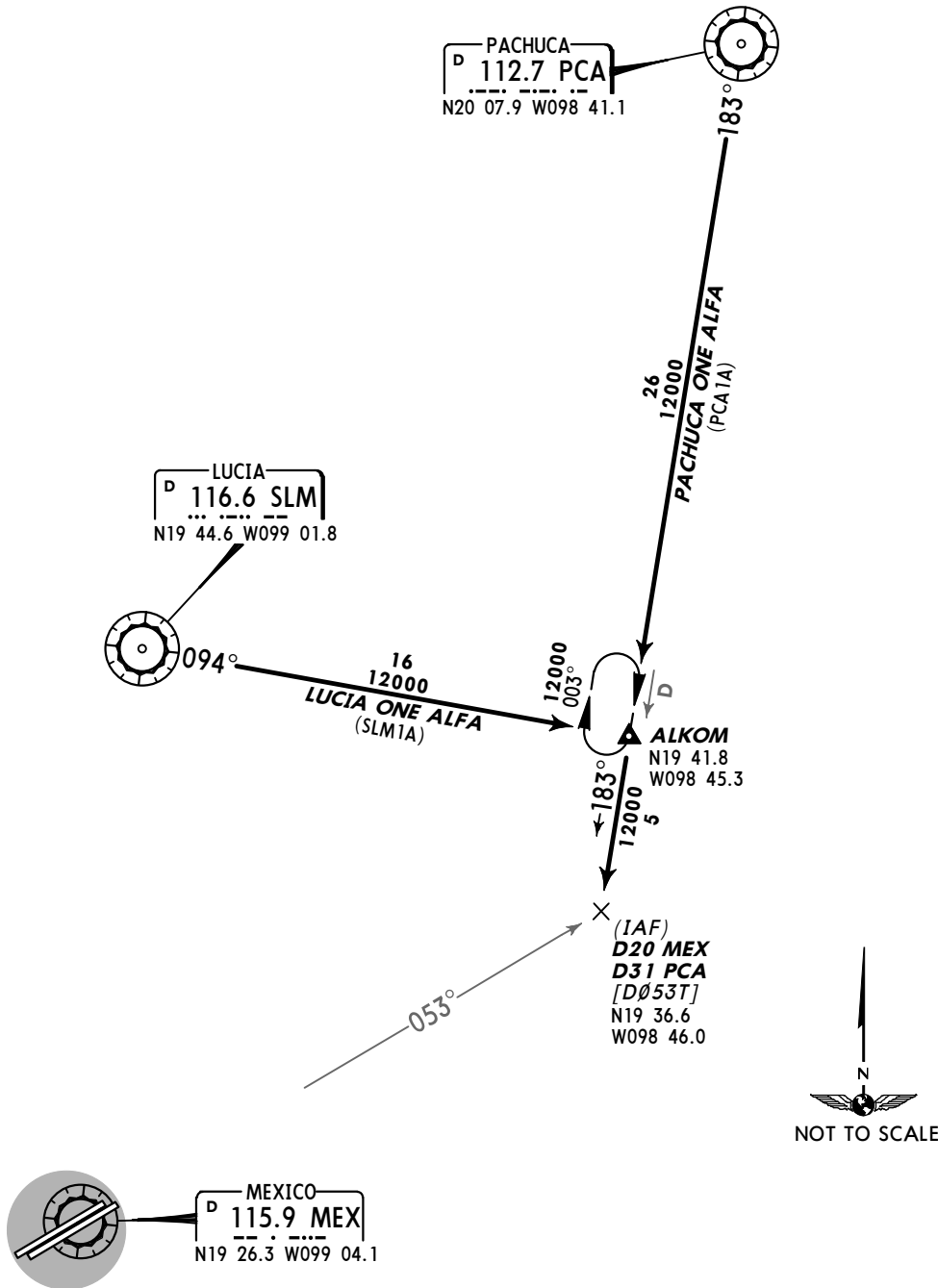
AVSAR 3B (AVSAR3B) [AVSA3B]
 DATUL 3B (DATUL3B) [DATU3B]
 SASUT 1B (SASUT1B) [SASU1B]
 TIKEB 1B (TIKEB1B) [TIKE1B]
 (RWYS 23L/R)



Direct distance from D8.0 SLM to:
Benito Juarez Intl 14 NM

<p>D-ATIS 127.65</p>	<p>Apt Elev 7316'</p>	<p>Alt Set: IN (MB on req) Trans level: FL195 Trans alt: 18500'</p> <ol style="list-style-type: none"> 1. These arrival instructions can be changed in accordance with ATC instructions by means of RADAR vectors and/or speed changes. 2. If due to aircraft performance your aircraft cannot adjust to the speed and/or altitude restrictions, please inform ATC as soon as possible so that the proper aircraft separation can be maintained.
--------------------------	---------------------------	--

**LUCIA ONE ALFA (SLM1A),
PACHUCA ONE ALFA (PCA1A)
ARRIVALS
(RWYS 23L/R)**



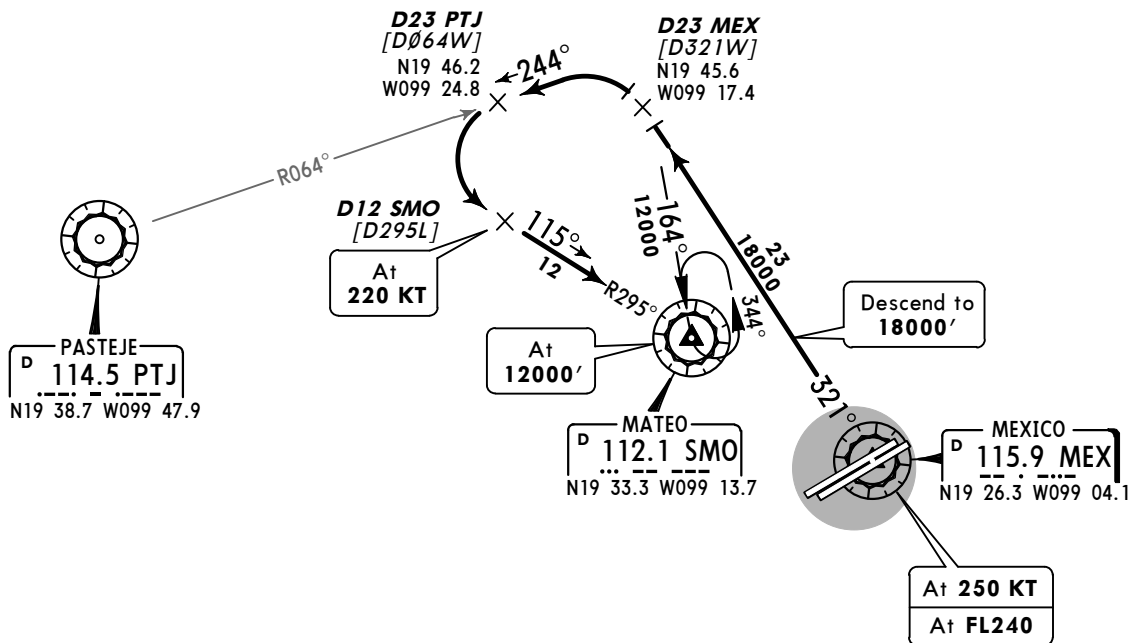
STAR	ROUTING	ALTITUDE
<p>LUCIA ONE ALFA</p>	<p>From SLM VOR on SLM R-094 to ALKOM, turn RIGHT to intercept PCA R-183 to D31 PCA and wait for ATC instructions to continue with the approach procedure.</p>	<p>MAINTAIN 12000'</p>
<p>PACHUCA ONE ALFA</p>	<p>From PCA VOR on PCA R-183 to D31 PCA and wait for ATC instructions to continue with the approach procedure.</p>	

D-ATIS
127.65

Apt Elev
7316'

Alt Set: IN (MB on req) Trans level: FL195 Trans alt: 18500'

MEXICO FIVE ALFA (MEX5A) ARRIVAL
(RWYS 05L/R)



Direct distance from SMO VOR to:
Benito Juarez Intl 11 NM



ROUTING

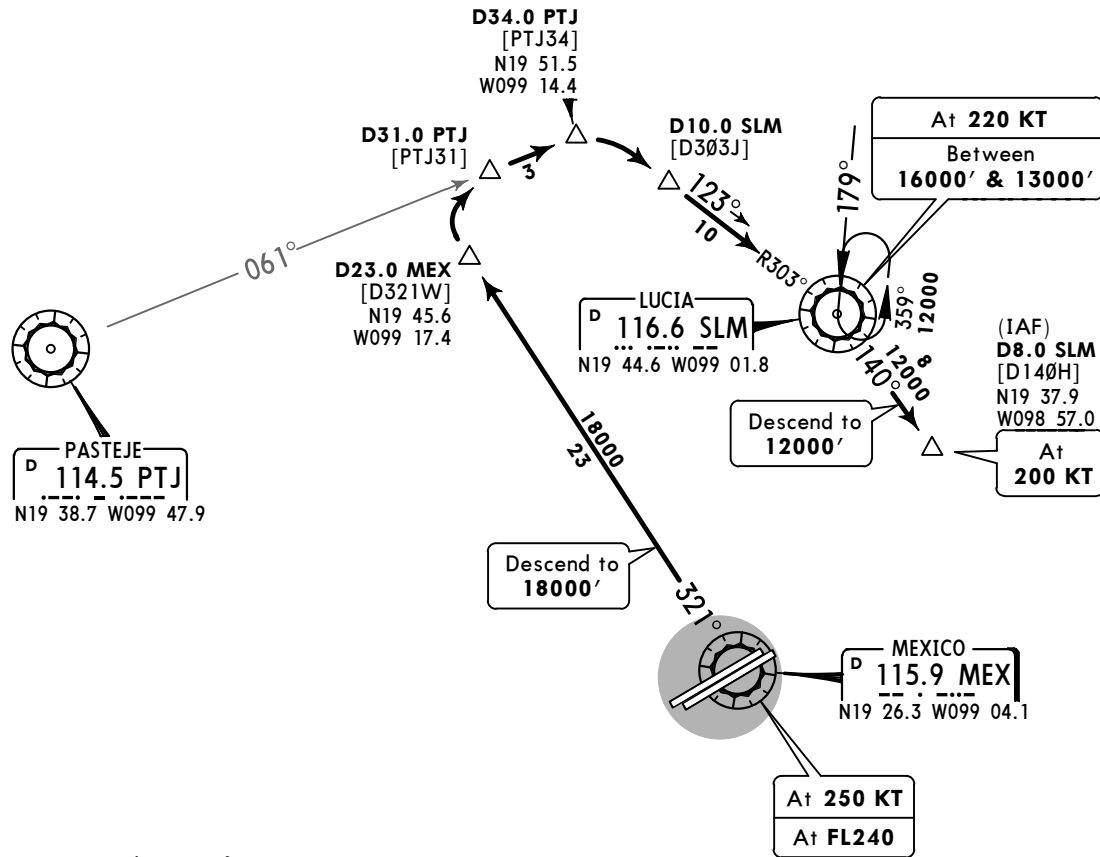
From MEX VOR on MEX R-321 to D23 MEX descending to 18000'. Turn LEFT and intercept PTJ R-064 to D23 PTJ then turn LEFT and intercept SMO R-295 to SMO VOR. EXPECT authorization to proceed with approach procedure.

D-ATIS
127.65

Apt Elev
7316'

Alt Set: IN (MB on req) Trans level: FL195 Trans alt: 18500'

MEXICO 3B (MEX3B)
(RWYS 23L/R)



Direct distance from D8.0 SLM to:
Benito Juarez Intl 14 NM

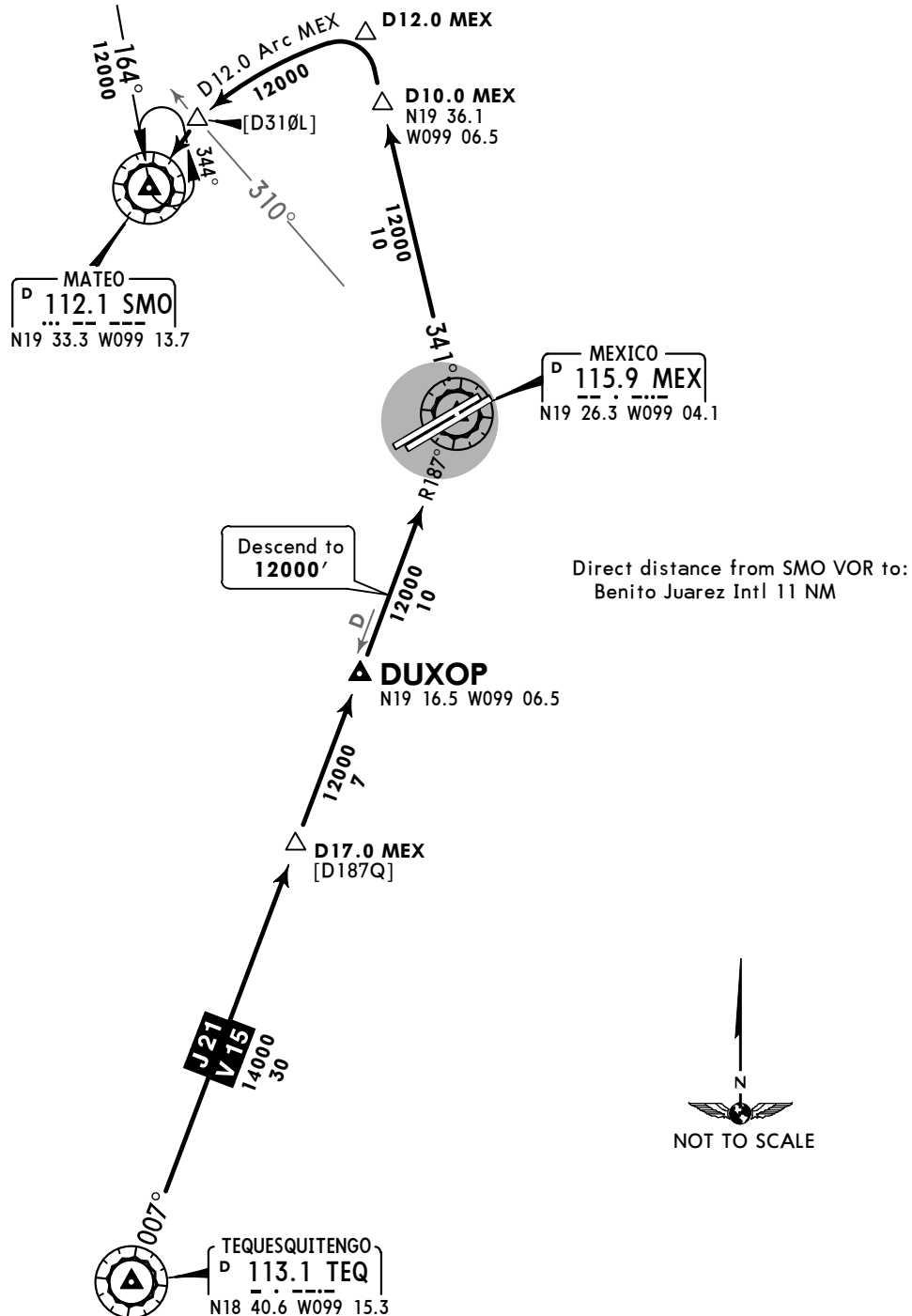


ROUTING

From MEX VOR on MEX R-321 to D23.0 MEX descending to 18000'. Turn RIGHT to intercept PTJ R-061 to D34.0 PTJ. Turn RIGHT to intercept SLM R-303 to SLM VOR. Follow SLM R-140 to D8.0 SLM and descend to 12000' and EXPECT authorization to proceed with approach procedure.

<p>D-ATIS 127.65</p>	<p>Apt Elev 7316'</p>	<p>Alt Set: IN (MB on req) Trans level: FL195 Trans alt: 18500'</p> <ol style="list-style-type: none"> 1. This procedure is for turboprop operations only. 2. These arrival instructions can be changed in accordance with ATC instructions by means of RADAR vectors and/or speed changes. 3. If due to aircraft performance your aircraft cannot adjust to the speed and/or altitude restrictions, please inform ATC as soon as possible so that the proper aircraft separation can be maintained.
--------------------------	---------------------------	---

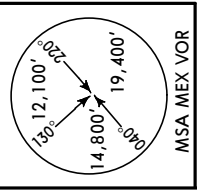
DUXOP 1 (DUXOP1)
(RWYS 05L/R)



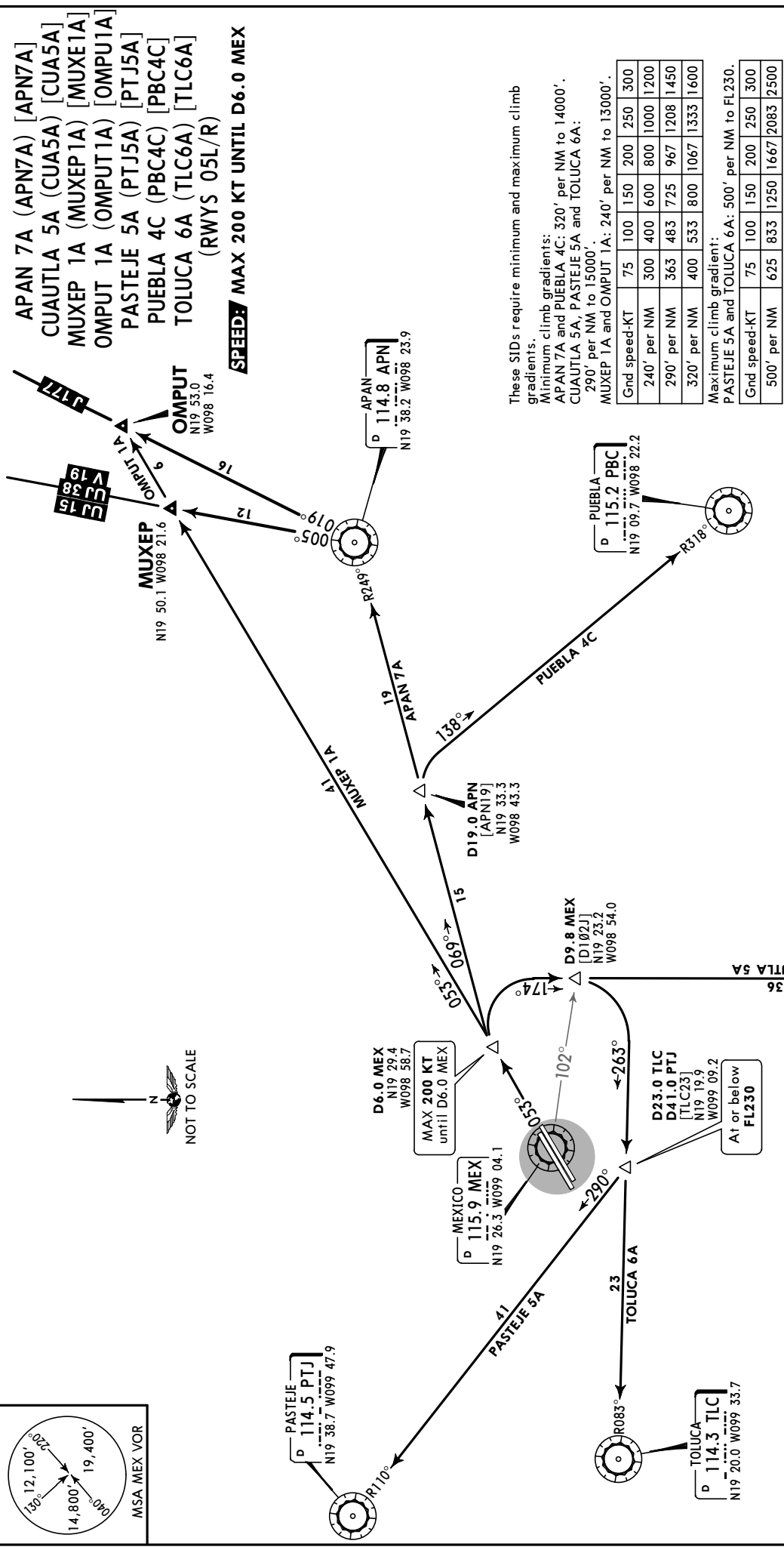
ROUTING

From DUXOP proceed on MEX R-187 descending to 12000' to MEX VOR. Turn LEFT to intercept MEX R-341 to D10.0 MEX, turn LEFT and proceed on the 12.0 DME Arc MEX to SMO VOR and EXPECT authorization to proceed with approach procedure.

MEXICO Terminal (R) (DEP)
West 129.1 | East 120.5
Apt Elev 7316'
Trans level: FL195 Trans alt: 18500'



- In case of failure of MEX VOR/DME and other nav aids involved in each procedure, EXPECT RADAR vectors.
- These SIDs can be changed in accordance with ATC instructions by means of RADAR vectors and/or speed changes.

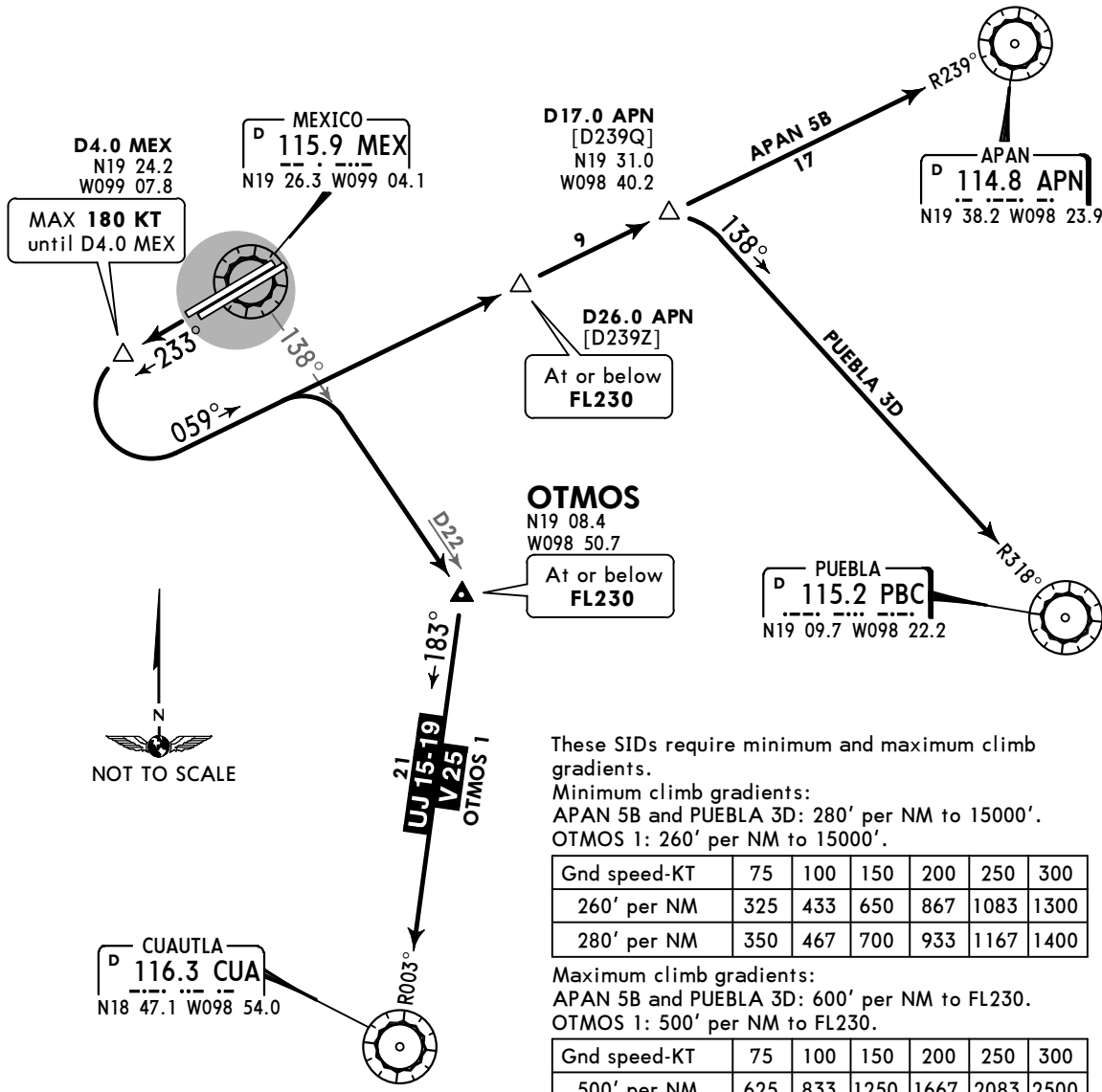
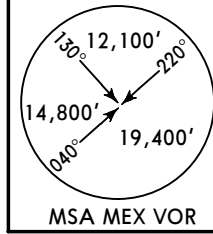


SID	INITIAL CLIMB	ALTITUDE
APAN 7A	Climb via MEX R-053 to D6.0 MEX, turn RIGHT to intercept APN R-249 to APN VOR.	MAINTAIN FL270 until further notice
MUXEP 1A OMPUT 1A	Climb via MEX R-053 to D6.0 MEX, proceed on MEX R-053 to MUXEP or OMPUT.	MAINTAIN FL230 until further notice
CUAUTLA 5A	Climb via MEX R-053 to D6.0 MEX, turn RIGHT to intercept CUA R-354 to CUA VOR.	
PASTEJE 5A	Climb via MEX R-053 to D6.0 MEX, turn RIGHT and continue on heading 174° to MEX R-102/D9.8, turn RIGHT to intercept TLC R-083 to D23.0 TLC, turn RIGHT and intercept PTJ R-110 to PTJ VOR.	
PUEBLA 4C	Climb via MEX R-053 to D6.0 MEX, turn RIGHT to intercept PBC R-318 to PBC VOR.	MAINTAIN FL230 until further notice
TOLUCA 6A	Climb via MEX R-053 to D6.0 MEX, turn RIGHT to intercept TLC R-083 to TLC VOR.	
ROUTING		
Continue via assigned route or in accordance with ATC instructions.		

MEXICO Terminal (R) (DEP) West East 129.1 120.5	Apt Elev 7316'	Trans level: FL195 Trans alt: 18500' 1. In case of failure of MEX VOR/DME and other nav aids involved in each procedure, EXPECT RADAR vectors. 2. These SIDs can be changed in accordance with ATC instructions by means of RADAR vectors and/or speed changes.
--	-------------------	---

APAN 5B (APN5B)
OTMOS 1 (OTMOS1)
PUEBLA 3D (PBC3D)
(RWYS 23L/R)

SPEED: MAX 180 KT UNTIL D4.0 MEX



These SIDs require minimum and maximum climb gradients.
Minimum climb gradients:
APAN 5B and PUEBLA 3D: 280' per NM to 15000'.
OTMOS 1: 260' per NM to 15000'.

Gnd speed-KT	75	100	150	200	250	300
260' per NM	325	433	650	867	1083	1300
280' per NM	350	467	700	933	1167	1400

Maximum climb gradients:
APAN 5B and PUEBLA 3D: 600' per NM to FL230.
OTMOS 1: 500' per NM to FL230.

Gnd speed-KT	75	100	150	200	250	300
500' per NM	625	833	1250	1667	2083	2500
600' per NM	750	1000	1500	2000	2500	3000

SID	INITIAL CLIMB	ALTITUDE
APAN 5B	Climb via MEX R-233 to D4.0 MEX, turn LEFT to intercept APN R-239 to APN VOR.	MAINTAIN FL270 until further notice
OTMOS 1	Climb via MEX R-233 to D4.0 MEX, turn LEFT to intercept MEX R-138 to OTMOS. Turn RIGHT to intercept CUA R-003 to CUA VOR.	MAINTAIN FL230 until further notice
PUEBLA 3D	Climb via MEX R-233 to D4.0 MEX, turn LEFT to intercept APN R-239 and proceed to D17.0 APN, turn RIGHT to intercept PBC R-318 to PBC VOR.	

ROUTING
Continue via assigned route or in accordance with ATC instructions.

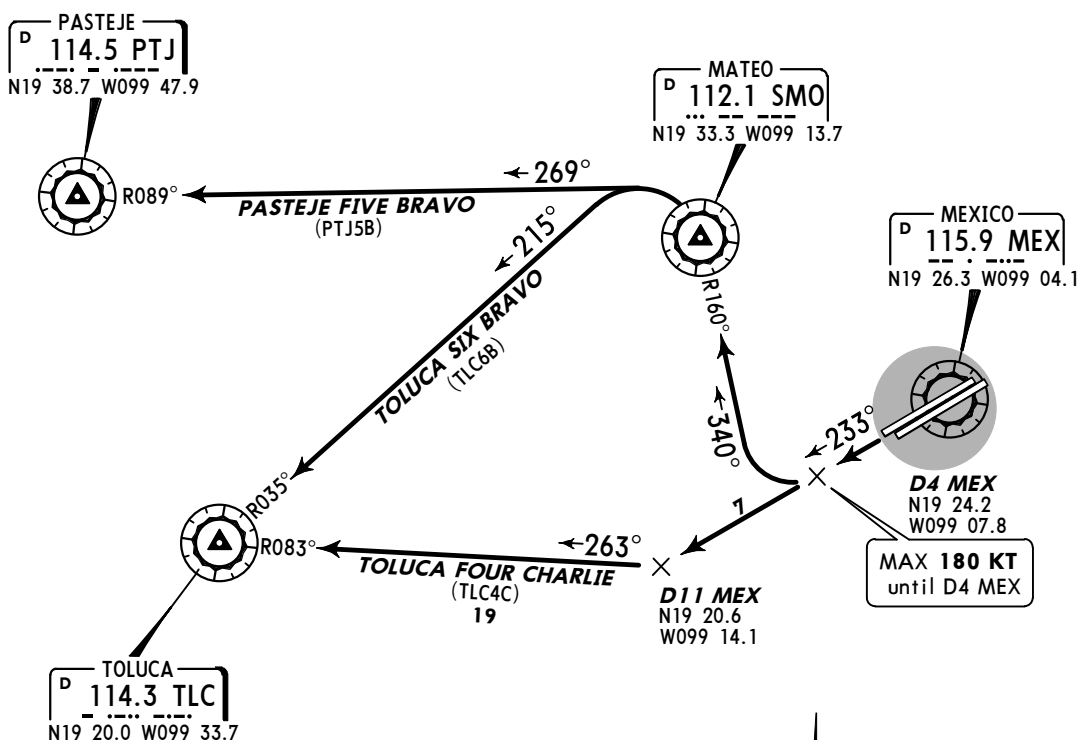
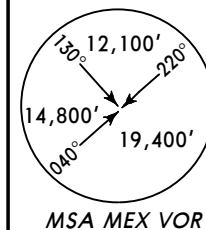
CHANGES: MEVIL renamed OTMOS.

MEXICO
Terminal (R) (DEP)
West East
129.1 120.5

Apt Elev
7316'

- Trans level: FL195 Trans alt: 18500'
1. In case of failure of MEX and other nav aids involved in each procedure, EXPECT RADAR vectors.
 2. These SIDs can be changed in accordance with ATC instructions by means of RADAR vectors and/or speed changes.

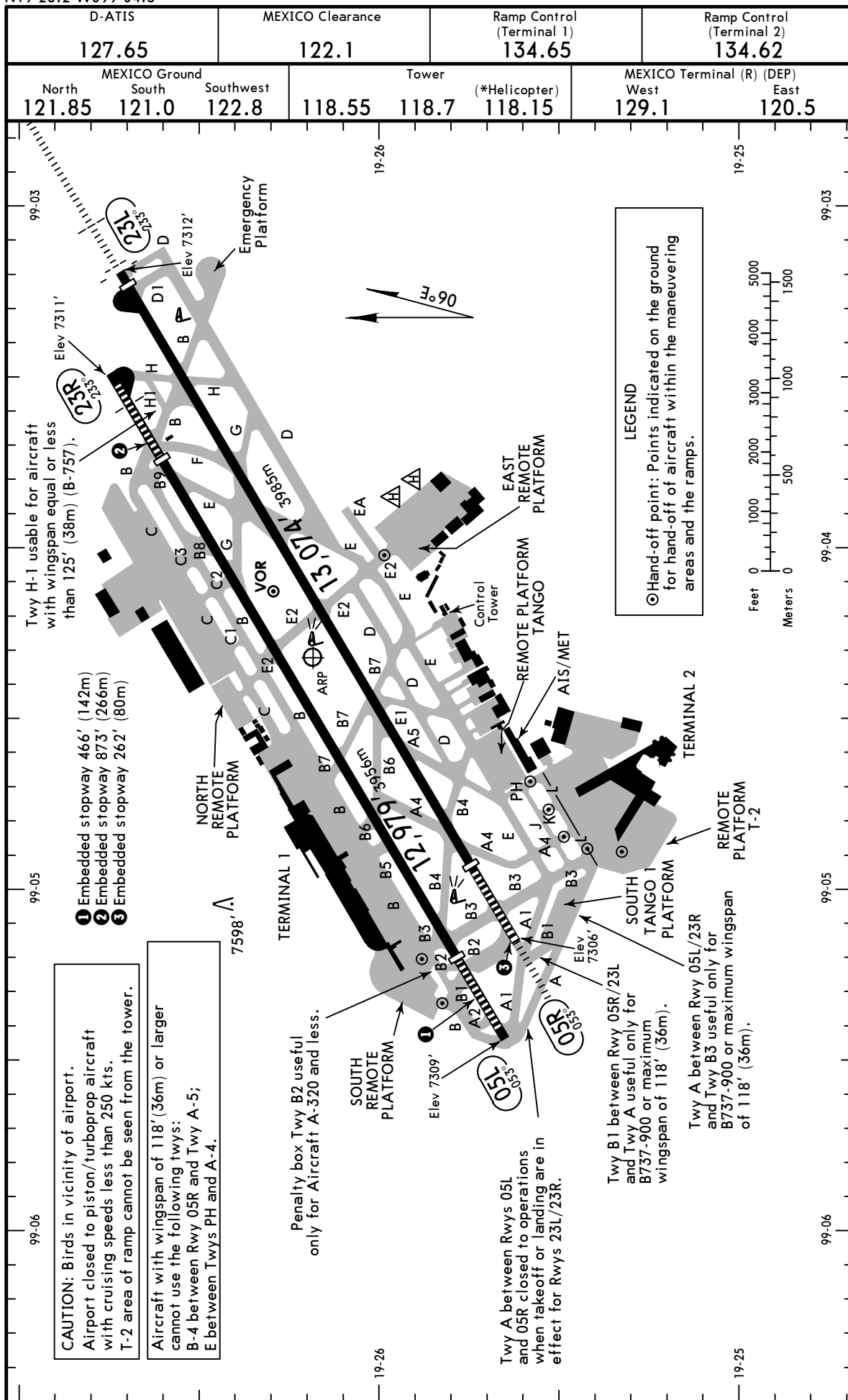
**PASTEJE FIVE BRAVO (PTJ5B),
TOLUCA SIX BRAVO (TLC6B),
TOLUCA FOUR CHARLIE (TLC4C) DEPARTURES**
(RWYS 23L/R)
SPEED: MAX 180 KT UNTIL D4 MEX



These SIDs require minimum climb gradients:
 PASTEJE FIVE BRAVO and TOLUCA SIX BRAVO:
 320' per NM to 15000'.
 TOLUCA FOUR CHARLIE: 370' per NM to 15000'.

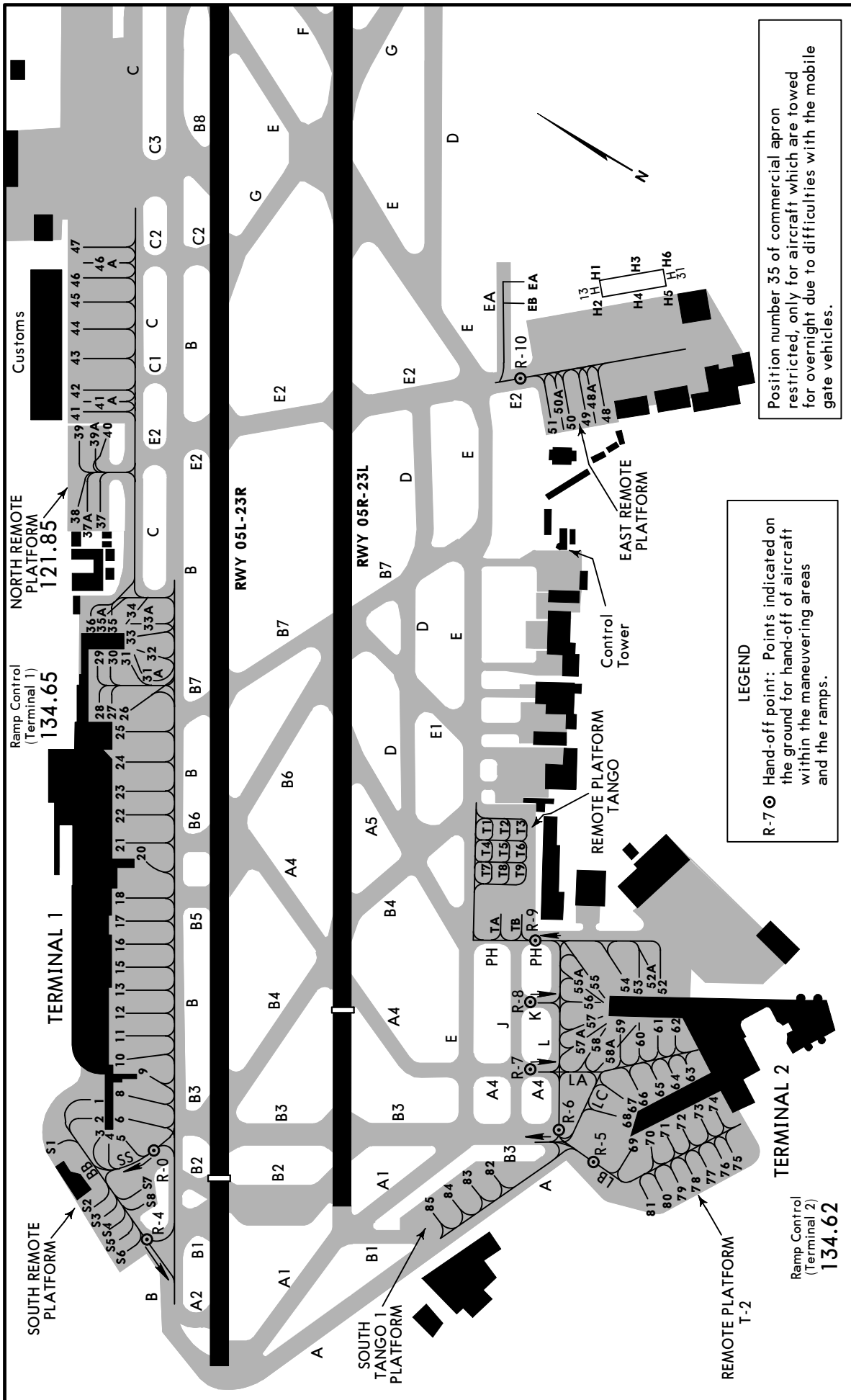
Gnd speed-KT	75	100	150	200	250	300
320' per NM	400	533	800	1067	1333	1600
370' per NM	463	617	925	1233	1542	1850

SID	INITIAL CLIMB
PASTEJE FIVE BRAVO	Climb via MEX R-233 to D4 MEX, turn RIGHT to intercept SMO R-160 to SMO, turn LEFT to intercept PTJ R-089 to PTJ VOR.
TOLUCA SIX BRAVO	Climb via MEX R-233 to D4 MEX, turn RIGHT to intercept SMO R-160 to SMO, turn LEFT to intercept TLC R-035 to TLC VOR.
TOLUCA FOUR CHARLIE	Climb via MEX R-233 to D11 MEX, turn RIGHT to intercept TLC R-083 to TLC VOR.
ROUTING	
At PTJ or TLC VOR continue via assigned route or in accordance with ATC instructions.	



GENERAL						
CAUTION: Birds in the vicinity of airport.						
All civil aircraft that operate within a radius of 100 NM of MEX VOR must have transponder and automatic altitude transmitter.						
ADDITIONAL RUNWAY INFORMATION						
RWY				USABLE LENGTHS		WIDTH
				LANDING BEYOND		
				Threshold	Glide Slope	TAKE-OFF
05R	HIRL	HIALS	PAPI-L (angle 3.0°)	11,582' 3530m	10,562' 3219m	148' 45m
23L	HIRL	HIALS	PAPI-L (angle 3.0°)	12,549' 3825m	11,700' 3566m	
05L	HIRL	SALS	REIL PAPI-L (angle 3.0°)	9,751' 2972m		11,342' 3457m
23R	HIRL	SALS	REIL PAPI-L (angle 3.0°)	10,112' 3082m		11,772' 3588m
TAKE-OFF						
Rwys 05L, 05R				Rwys 23L, 23R		
SCHEDULED AIR CARRIER ONLY				Other		
If Weather Below Landing Minimums, Take-off Alternate Airport Required.						
Pilot is required to report existing visibility of at least 7 HIRLS and RCL along the rwy in the take-off direction. If differences exist between reported visibility and Pilot visibility, the Pilot's report will be given preference.						
2 Eng	1/4			1 & 2 Eng	500- 1	700- 1
3 & 4 Eng				3 & 4 Eng	500- 1	
FOR FILING AS ALTERNATE						
Precision				Non-Precision		
A	600-2			1000-3		
B						
C						
D						

CHANGES: Lighting, landing distances.



Position number 35 of commercial apron restricted, only for aircraft which are towed for overnight due to difficulties with the mobile gate vehicles.

LEGEND
 R-7 ⊙ Hand-off point: Points indicated on the ground for hand-off of aircraft within the maneuvering areas and the ramps.

CHANGES: Stands added, South Tango 1 Platform added.

PARKING GATE COORDINATES			
GATE No.	COORDINATES	GATE No.	COORDINATES
Terminal 1		Terminal 2	
1, 2, 3	N19 26.0 W099 05.2	52, 52-A, 53	N19 25.4 W099 04.7
4 thru 6, 8, 9	N19 25.9 W099 05.2	54 thru 58	N19 25.5 W099 04.7
10 thru 13	N19 26.0 W099 05.1	58-A	N19 25.4 W099 04.8
15, 16	N19 26.0 W099 05.0	59 thru 62	N19 25.4 W099 04.7
17, 18	N19 26.1 W099 05.0	63	N19 25.3 W099 04.7
20, 21, 22	N19 26.1 W099 04.9	64, 65	N19 25.3 W099 04.8
23	N19 26.1 W099 04.8	66, 67	N19 25.4 W099 04.8
24, 25	N19 26.2 W099 04.8	68	N19 25.4 W099 04.9
26, 27	N19 26.2 W099 04.7	69	N19 25.3 W099 04.9
28	N19 26.2 W099 04.8	70 thru 74	N19 25.3 W099 04.8
29	N19 26.3 W099 04.7	75 thru 77	N19 25.2 W099 04.8
30, 31, 31-A	N19 26.2 W099 04.7	78 thru 81	N19 25.3 W099 04.9
32	N19 26.2 W099 04.7	South Tango 1 Platform	
33	N19 26.2 W099 04.6	82 thru 84	N19 25.5 W099 05.0
33-A, 34, 35	N19 26.3 W099 04.6	85	N19 25.5 W099 05.1
35-A, 36	N19 26.3 W099 04.7	Heliport	
North Remote Platform		H1, H2	N19 25.9 W099 03.9
37, 37-A, 38	N19 26.4 W099 04.5	H3, H4, H5	N19 25.9 W099 03.8
39, 39-A, 40	N19 26.4 W099 04.4	H6	N19 25.9 W099 03.7
Customs		Remote Platform Tango	
41, 41-A	N19 26.5 W099 04.4	T-1 thru T-6	N19 25.7 W099 04.6
42, 43, 44	N19 26.5 W099 04.3	T-7	N19 25.7 W099 04.7
45, 46	N19 26.5 W099 04.2	T-8	N19 25.7 W099 04.6
46-A, 47	N19 26.6 W099 04.2	T-9	N19 25.6 W099 04.6
East Remote Platform		TA, TB	N19 25.6 W099 04.7
48, 48A, 49	N19 25.9 W099 04.0		
50, 50-A	N19 25.9 W099 04.1		
51	N19 26.0 W099 04.0		
EA, EB	N19 26.0 W099 03.9		
South Remote Platform			
S-1	N19 26.0 W099 05.3		
S-2, S-3	N19 25.9 W099 05.3		
S-4	N19 25.9 W099 05.4		
S-5, S-6	N19 25.8 W099 05.4		
S-7	N19 25.9 W099 05.3		
S-8	N19 25.8 W099 05.3		

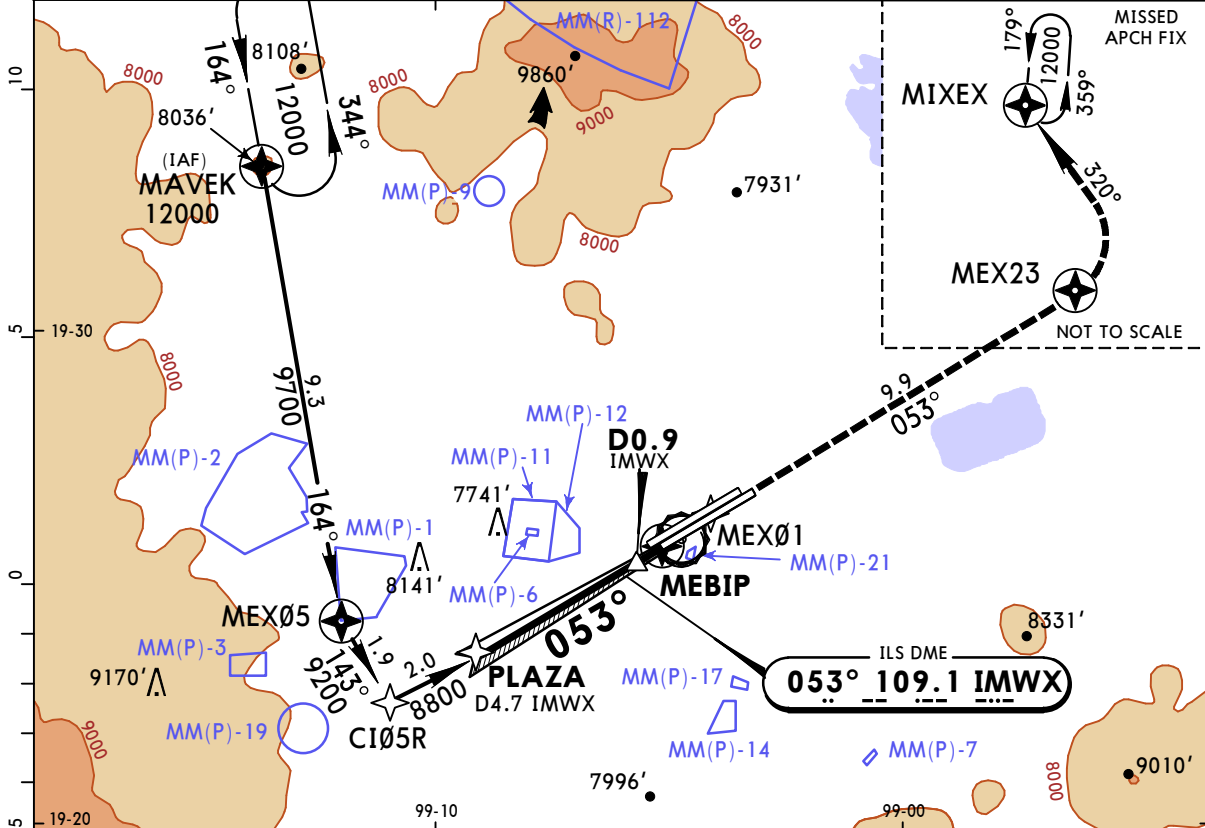
MMM/MEX
BENITO JUAREZ INTL

22 MAY 15

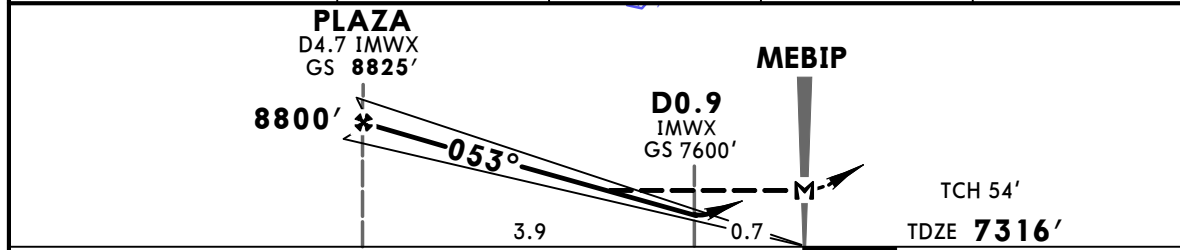
(11-1)

MEXICO CITY, MEXICO
RNAV (GPS) OR ILS Rwy 05R

D-ATIS 127.65	MEXICO Terminal (R) (APP) 129.6	MEXICO Approach (R) Final 121.2	MEXICO Tower 118.55 118.7	Ground North 121.85	Ground South 121.0	Ground Southwest 122.8																								
LOC IMWX 109.1	Final Apch Crs 053°	GS PLAZA 8825' (1509')	ILS DA(H) 7600' (284')	Apt Elev 7316'																										
RNAV		Minimum Alt PLAZA 8800' (1484')	LNAV MDA(H) 7900' (584')	TDZE 7316'																										
<p>MISSED APCH: Climb outbound on track 053° to MEX23, turn LEFT to proceed inbound track 320° to MIXEX, join holding in accordance with ATC instructions.</p> <table border="1"> <tr> <td colspan="8">MISSED APCH: Time to Turn from DA to D9.8 IMWX</td> </tr> <tr> <td>Gnd speed-Kts</td> <td>80</td> <td>100</td> <td>120</td> <td>140</td> <td>160</td> <td>180</td> <td>200</td> </tr> <tr> <td>Time</td> <td>7:57</td> <td>6:23</td> <td>5:20</td> <td>4:34</td> <td>4:00</td> <td>3:33</td> <td>3:12</td> </tr> </table>							MISSED APCH: Time to Turn from DA to D9.8 IMWX								Gnd speed-Kts	80	100	120	140	160	180	200	Time	7:57	6:23	5:20	4:34	4:00	3:33	3:12
MISSED APCH: Time to Turn from DA to D9.8 IMWX																														
Gnd speed-Kts	80	100	120	140	160	180	200																							
Time	7:57	6:23	5:20	4:34	4:00	3:33	3:12																							
<p>Alt Set: IN (MB on req) Trans level: FL 195 Trans alt: 18500'</p> <p>1. RADAR required. 2. GPS or DME/DME IRU required. 3. RNAV 1. 4. ILS DME usable for aircraft with accurate instrument reading within 0.2 NM. 5. Restriction: Max approach speed 160 KIAS or minimum maneuvering speed at MAVEK.</p>																														



IMWX DME	4.74	4.0	3.0	2.0
ALTITUDE	8825'	8590'	8271'	7953'



Gnd speed-Kts	70	90	100	120	140	160	SALS	↑ on 053°	MEX23
GS	3.00°	372	478	531	637	743			
MAP at MEBIP							PAPI		
PLAZA to MAP	4.6	3:26	2:44	2:17	1:57	1:43			

STRAIGHT-IN LANDING RWY 05R						CIRCLE-TO-LAND		
ILS		LOC (GS out)		LNAV		Max Kts	MDA(H)	
DA(H)	7600' (284')	MDA(H)	7900' (584')	MDA(H)	7900' (584')		90/120	
FULL	ALS out	ALS out	ALS out	ALS out	ALS out			
A/B		3/4	1	1		7960'(644') - 1		
C	1/2	3/4	1 1/4	1 1/2	1 1/2	7960'(644') - 1 3/4		
D			1 1/2	1 3/4	1 3/4	7960'(644') - 2		

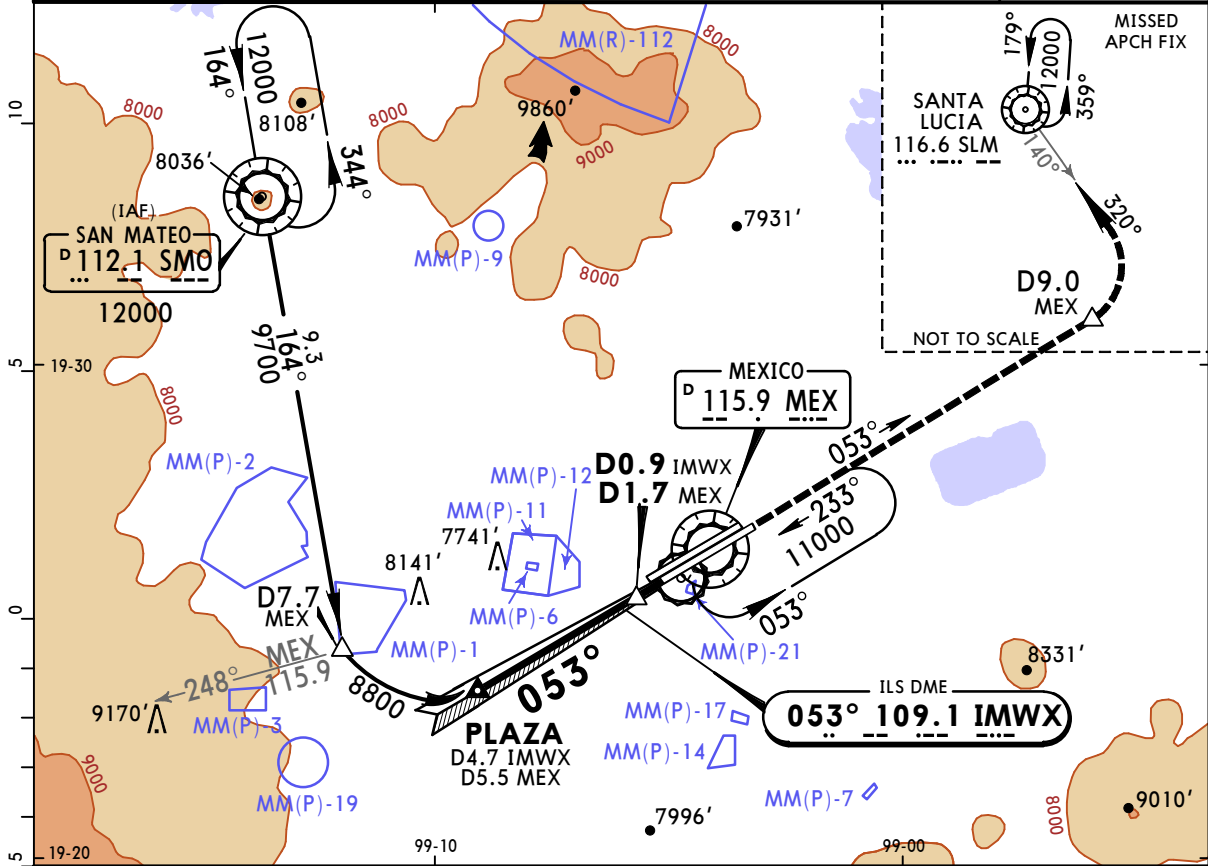
CHANGES: Ground control.

MMM/MEX
BENITO JUAREZ INTL

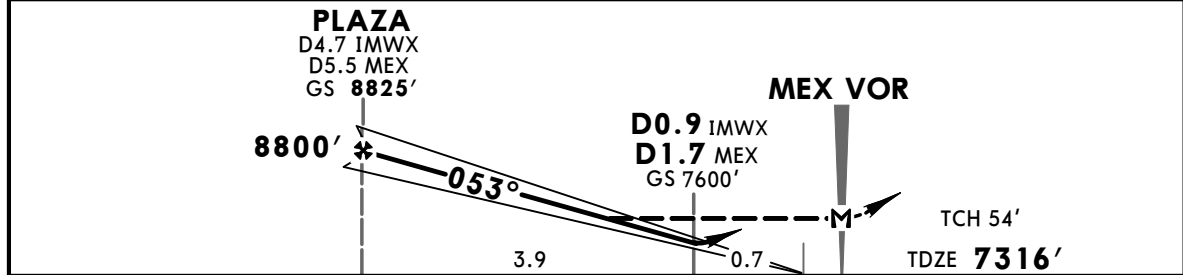
22 MAY 15 (11-2)

MEXICO CITY, MEXICO
ILS DME Rwy 05R

BRIEFING STRIP™	D-ATIS	MEXICO Terminal (R) (APP)	MEXICO Approach (R) Final		MEXICO Tower	Ground		
	127.65	129.6	121.2	119.75	118.55 118.7	North	South	Southwest
LOC	Final	GS	ILS	Apt Elev				
IMWX	Apch Crs	PLAZA	DA(H)	7316'				
109.1	053°	8825' (1509')	7600' (284')	TDZE 7316'				
MISSED APCH: Climb outbound on MEX VOR R-053 to D9.0 MEX, turn LEFT to intercept inbound SLM VOR R-140 to SLM VOR, join holding in accordance with ATC instructions.								
MISSED APCH: Time to Turn from DA to D9.0 MEX								
Gnd speed-Kts		80	100	120	140	160	180	200
Time		7:57	6:23	5:20	4:34	4:00	3:33	3:12
Alt Set: IN (MB on req)			Trans level: FL 195			Trans alt: 18500'		
1. Restriction: Max approach speed 160 KIAS or minimum maneuvering speed from SMO VOR. 2. ILS DME usable for aircraft with accurate instrument reading within 0.2 NM.								
						MSA MEX VOR		



IMWX DME	4.74	4.0	3.0	2.0
ALTITUDE	8825'	8590'	8271'	7953'



Gnd speed-Kts	70	90	100	120	140	160	SALS	MEX	D9.0	
GS	3.00°	372	478	531	637	743				↑ on
MAP at MEX VOR								PAPI	↑	MEX
PLAZA to MAP	5.5	4:43	3:40	3:18	2:45	2:21	2:04			

STRAIGHT-IN LANDING RWY 05R					CIRCLE-TO-LAND				
ILS		LOC (GS out)							
DA(H) 7600' (284')		MDA(H) 7900' (584')							
FULL		ALS out			ALS out		Max Kts		
A/B							90/120		
C	1/2	3/4			3/4		7960' (644') - 1		
D					1 1/4		140		
					1 1/2		7960' (644') - 1 3/4		
					1 1/2		165		
					1 3/4		7960' (644') - 2		

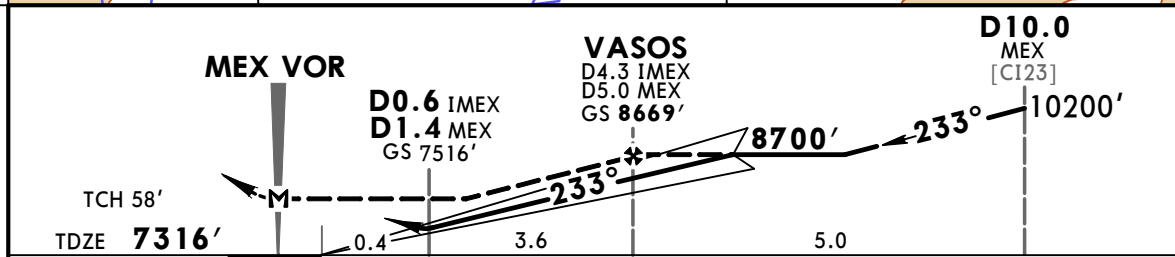
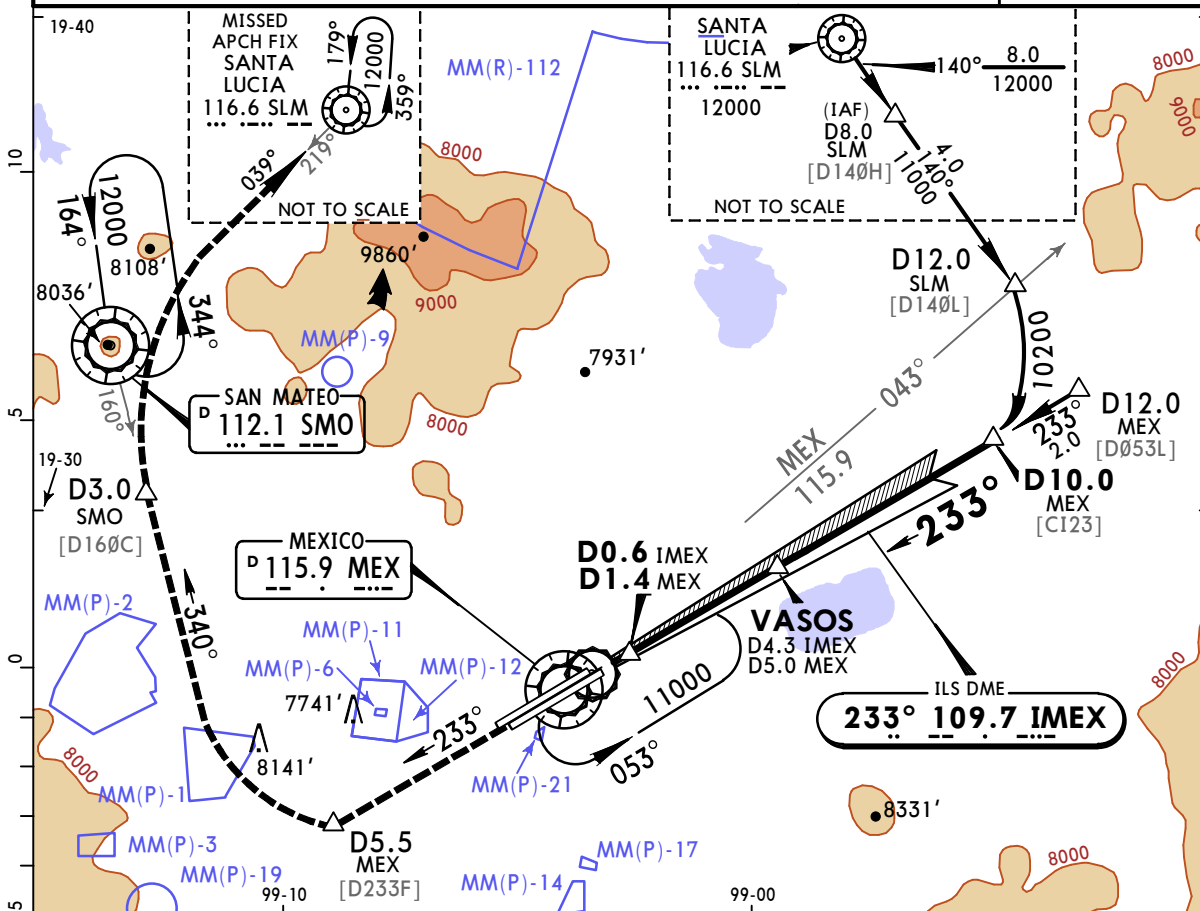
CHANGES: Ground control.

MMM/MEX
BENITO JUAREZ INTL

22 MAY 15 **(11-3)**

MEXICO CITY, MEXICO
ILS DME-1 Rwy 23L

D-ATIS 127.65	MEXICO Terminal (R) (APP) 129.6	MEXICO Approach (R) Final 121.2 119.75	MEXICO Tower 118.55 118.7	Ground North 121.85	South 121.0	Southwest 122.8
LOC IMEX 109.7	Final Aptch Crs 233°	GS VASOS 8669' (1353')	ILS DA(H) (CONDITIONAL) 7516' (200')	Apt Elev 7316'	TDZE 7316'	
MISSED APCH: Climb outbound on MEX VOR R-233 to D5.5 MEX, turn RIGHT to intercept inbound SMO VOR R-160 to D3.0 SMO, turn RIGHT to intercept inbound SLM VOR R-219 to SLM VOR, join holding in accordance with ATC instructions.						
Alt Set: IN (MB on req)			Trans level: FL 195	Trans alt: 18500'		
1. ILS DME usable for aircraft with accurate instrument reading within 0.2 NM.						MSA MEX VOR



Gnd speed-Kts	70	90	100	120	140	160	ALS	PAPI	MEX on 115.9 R-233	D5.5 MEX	
GS	3.00°	372	478	531	637	743					849
MAP at MEX VOR											

STRAIGHT-IN LANDING RWY 23L				CIRCLE-TO-LAND	
ILS		LOC (GS out)		Max Kts	MDA(H)
FULL	ALS out	ALS out	ALS out		
A/B				90/120	7960' (644') - 1
C	1/2	3/4	3/4	140	7960' (644') - 1 3/4
D			1	165	7960' (644') - 2
ALL Non Skd	DA(H) 7566' (250') - 1		1	1 1/4	

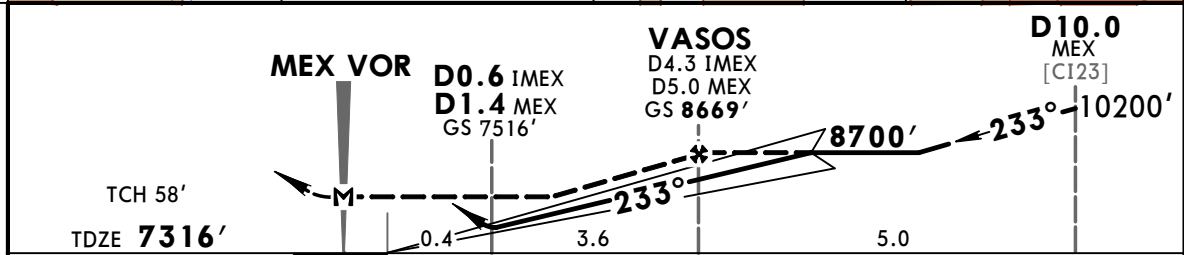
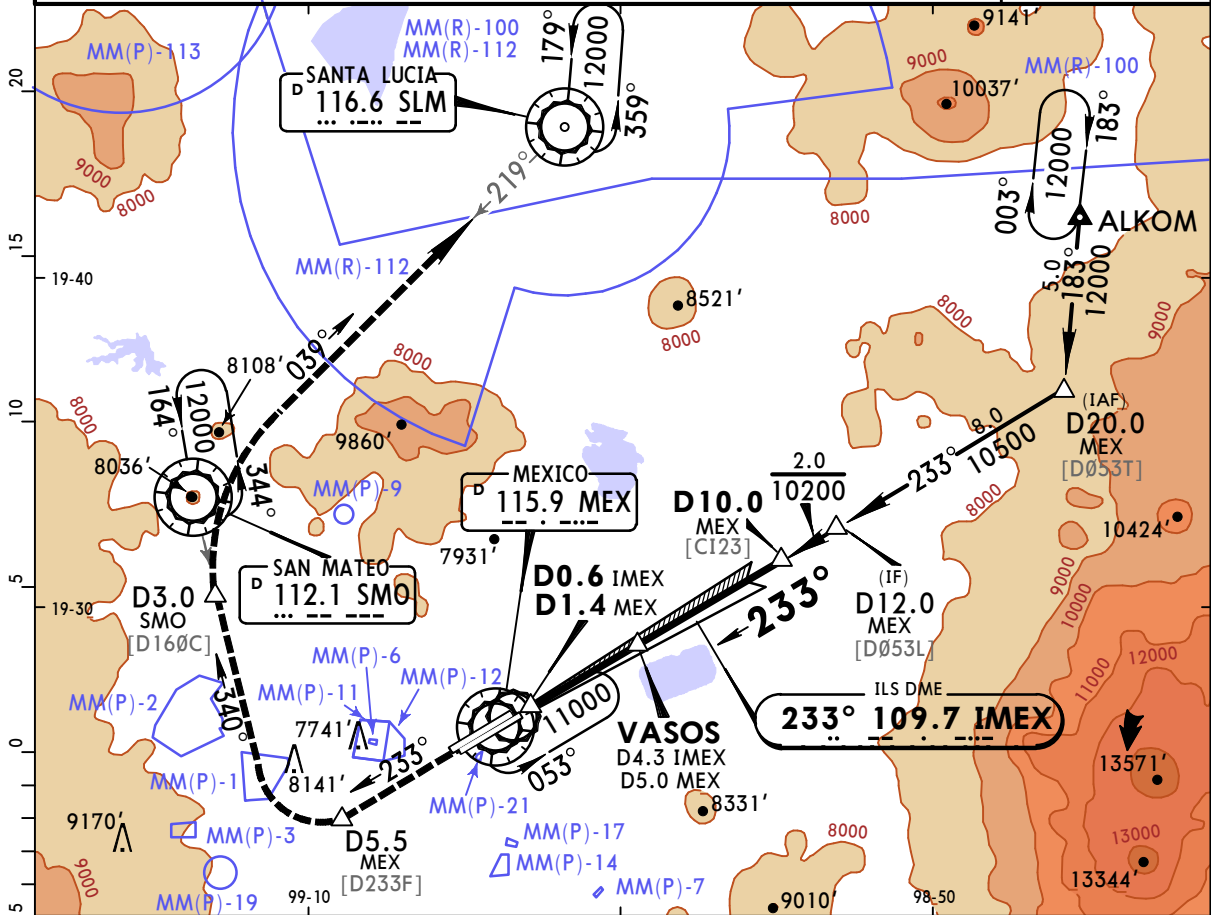
CHANGES: Ground control.

MMM/MEX
BENITO JUAREZ INTL

22 MAY 15 **(11-4)**

MEXICO CITY, MEXICO
ILS DME-2 Rwy 23L

D-ATIS 127.65	MEXICO Terminal (R) (APP) 129.6	MEXICO Approach (R) Final 121.2 119.75	MEXICO Tower 118.55 118.7	Ground North 121.85	Ground South 121.0	Ground Southwest 122.8
LOC IMEX 109.7	Final Apch Crs 233°	GS VASOS 8669' (1353')	ILS DA(H) (CONDITIONAL) 7516' (200')	Apt Elev 7316'	TDZE 7316'	
MISSED APCH: Climb outbound on MEX VOR R-233 to D5.5 MEX, turn RIGHT to intercept inbound SMO VOR R-160 to D3.0 SMO, turn RIGHT to intercept inbound SLM VOR R-219 to SLM VOR, join holding in accordance with ATC instructions.						
Alt Set: IN (MB on req)		Trans level: FL 195		Trans alt: 18500'		
1. ILS DME usable for aircraft with accurate instrument reading within 0.2 NM.						MSA MEX VOR



Gnd speed-Kts	70	90	100	120	140	160	ALS	MEX R-233	D5.5 MEX	
GS	3.00°	372	478	531	637	849				
MAP at MEX VOR							PAPI			

STRAIGHT-IN LANDING RWY 23L				CIRCLE-TO-LAND		
A/B	ILS		LOC (GS out)		Max Kts	
	DA(H)	7516' (200')	MDA(H)	7680' (364')		
C	FULL	ALS out	ALS out	ALS out	MDA(H)	
D	1/2	3/4	3/4	1	90/120	7960' (644') - 1
			1	1/4	140	7960' (644') - 1 3/4
ALL Non Skd	DA(H)	7566' (250') - 1	1	1/4	165	7960' (644') - 2

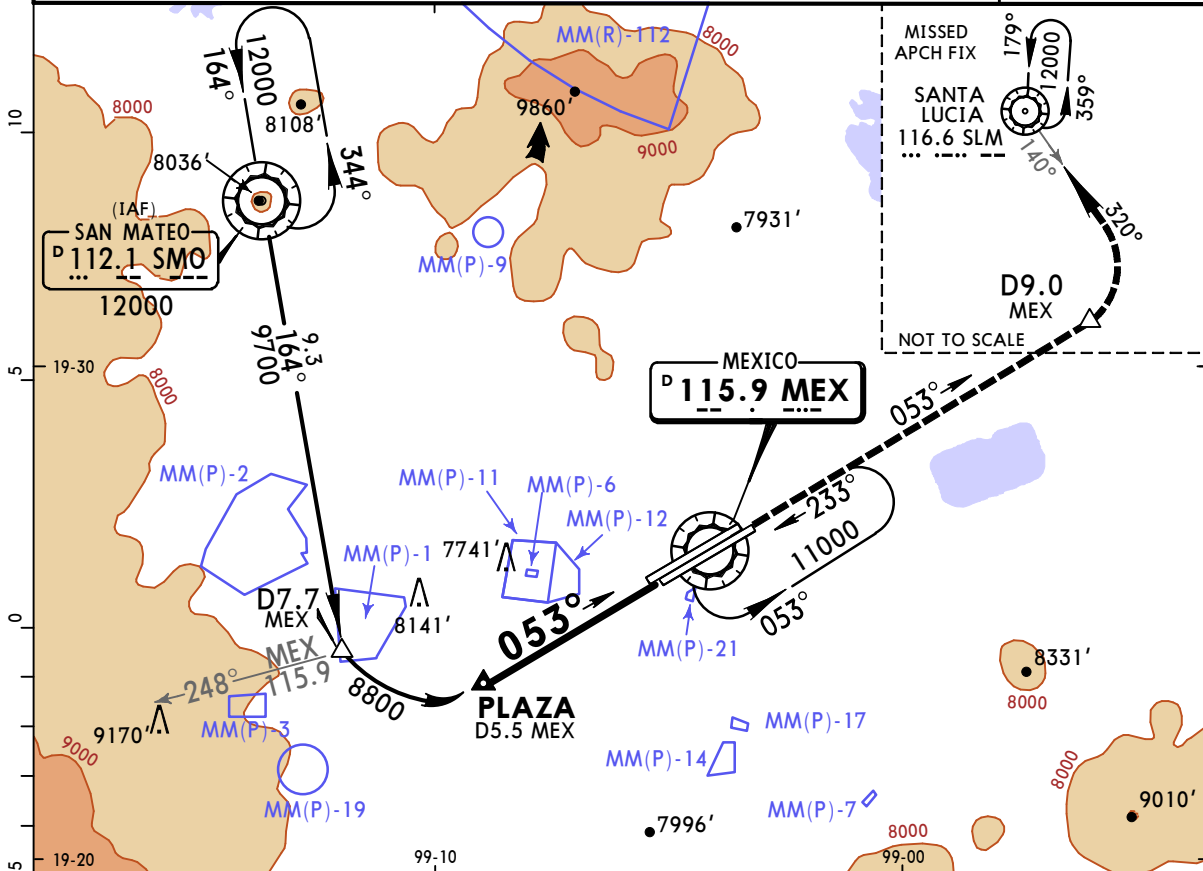
CHANGES: Ground control.

MMM/MEX
BENITO JUAREZ INTL

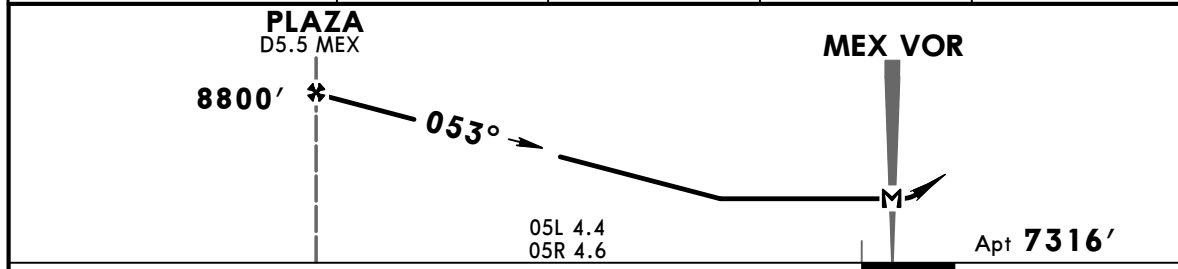
22 MAY 15 (13-1)

MEXICO CITY, MEXICO
VOR DME Rwy 05L/R

D-ATIS 127.65	MEXICO Terminal (R) (APP) 129.6	MEXICO Approach (R) Final 121.2 119.75	MEXICO Tower 118.55 118.7	Ground North 121.85	Ground South 121.0	Ground Southwest 122.8															
VOR MEX 115.9	Final Apch Crs 053°	Minimum Alt PLAZA 8800' (1484')	MDA(H) 7900' (584')	Apt Elev 7316'																	
MISSED APCH: Climb outbound on MEX VOR R-053 to D9.0 MEX, turn LEFT to intercept inbound SLM VOR R-140 to SLM VOR, join holding in accordance with ATC instructions.																					
MISSED APCH: Max Distance Outbound Track D9.0 MEX <table border="1"> <tr> <td>Gnd speed-Kts</td> <td>80</td> <td>100</td> <td>120</td> <td>140</td> <td>160</td> <td>180</td> <td>200</td> </tr> <tr> <td>Time</td> <td>6:45</td> <td>5:24</td> <td>4:30</td> <td>3:51</td> <td>3:22</td> <td>3:00</td> <td>2:42</td> </tr> </table>							Gnd speed-Kts	80	100	120	140	160	180	200	Time	6:45	5:24	4:30	3:51	3:22	3:00
Gnd speed-Kts	80	100	120	140	160	180	200														
Time	6:45	5:24	4:30	3:51	3:22	3:00	2:42														
Alt Set: IN (MB on req)			Trans level: FL 195		Trans alt: 18500'																
1. Restriction: Max approach speed 160 KIAS or minimum maneuvering speed from SMO VOR.						MSA MEX VOR															



MEX DME	5.5	5.0	4.0	3.0
ALTITUDE	8825'	8666'	8348'	8029'



Gnd speed-Kts	70	90	100	120	140	160	Rwy 05L SALS	Rwy 05R SALS	MEX on 115.9 R-053	D9.0 MEX
MAP at MEX VOR							REIL	PAPI		
PLAZA to MAP	5.5	4:43	3:40	3:18	2:45	2:21				

STRAIGHT-IN LANDING RWY 05L/R				CIRCLE-TO-LAND	
MDA(H) 7900' (584')				MDA(H)	
	ALS out			Max Kts	
A	1			90	7960' (644') -1
B	1½			120	7960' (644') -1¾
C	1¾			140	7960' (644') -2
D				165	7960' (644') -2

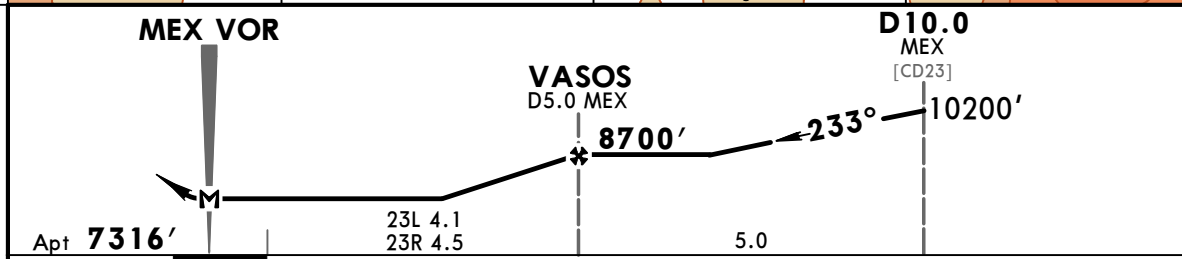
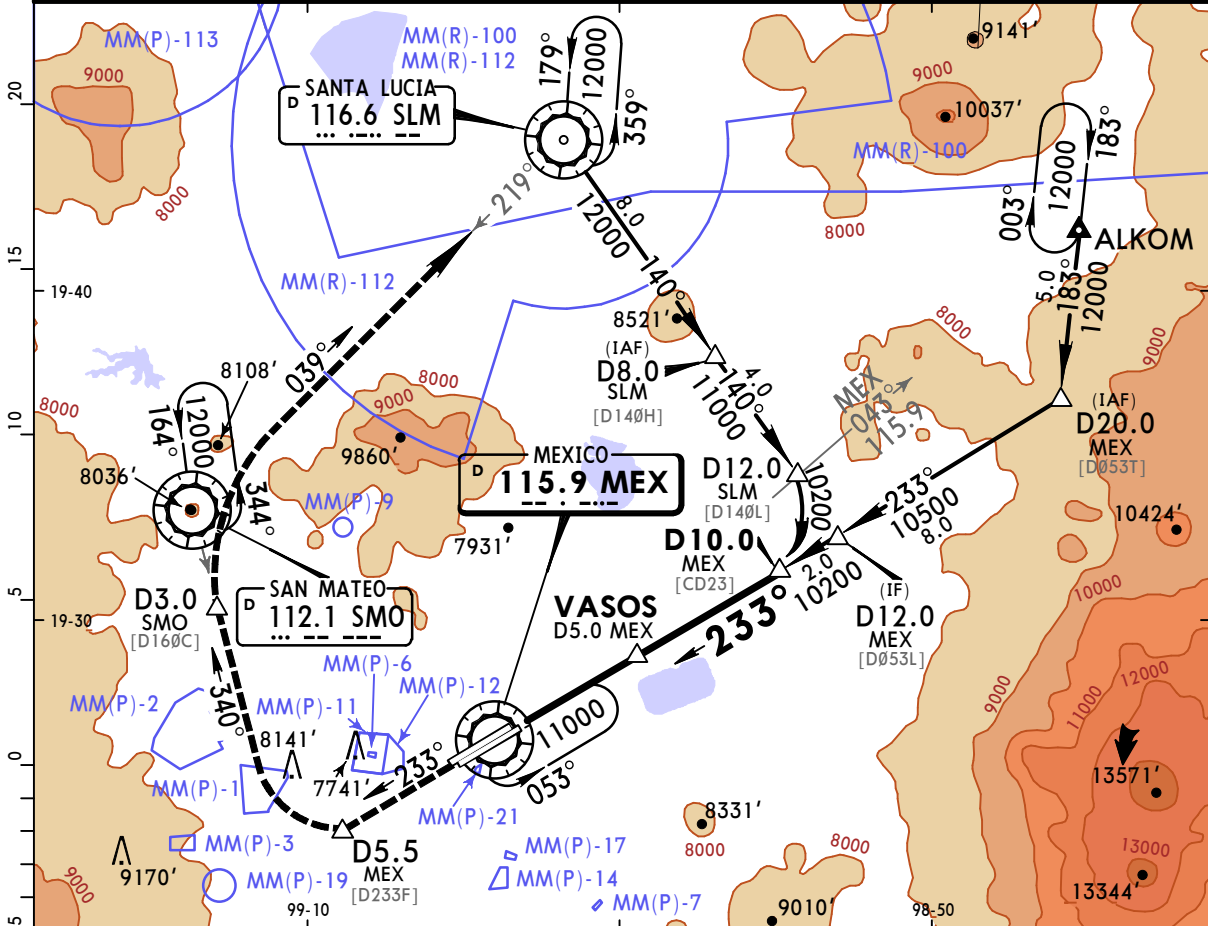
CHANGES: Ground control.

MMM/MEX
BENITO JUAREZ INTL

22 MAY 15 **(13-2)**

MEXICO CITY, MEXICO
VOR DME Rwy 23L/R

BRIEFING STRIP™	D-ATIS	MEXICO Terminal (R) (APP)	MEXICO Approach (R)	MEXICO Tower	Ground		
	127.65	129.6	121.2	Final 119.75	118.55	118.7	North 121.85 South 121.0 Southwest 122.8
VOR MEX	Final Apch Crs	Minimum Alt VASOS	MDA(H)	Apt Elev			
115.9	233°	8700' (1384')	7900' (584')	7316'			
MISSED APCH: Climb outbound on MEX VOR R-233 to D5.5 MEX, turn RIGHT to intercept inbound SMO VOR R-160 to D3.0 SMO, turn RIGHT to intercept SLM VOR R-219 to SLM VOR, join holding in accordance with ATC instructions.							MSA MEX VOR
Alt Set: IN (MB on req)		Trans level: FL 195		Trans alt: 18500'			



MAP at MEX VOR		Rwy 23L ALS	Rwy 23R SALS	MEX on 115.9 R-233	D5.5 MEX
		PAPI	PAPI		

STRAIGHT-IN LANDING RWY 23L/R		CIRCLE-TO-LAND	
MDA(H) 7900' (584')		MDA(H)	
	ALS out	Max Kts	
A	1	90	7960' (644') - 1
B		120	
C	1½	140	7960' (644') - 1¾
D	1¾	165	7960' (644') - 2

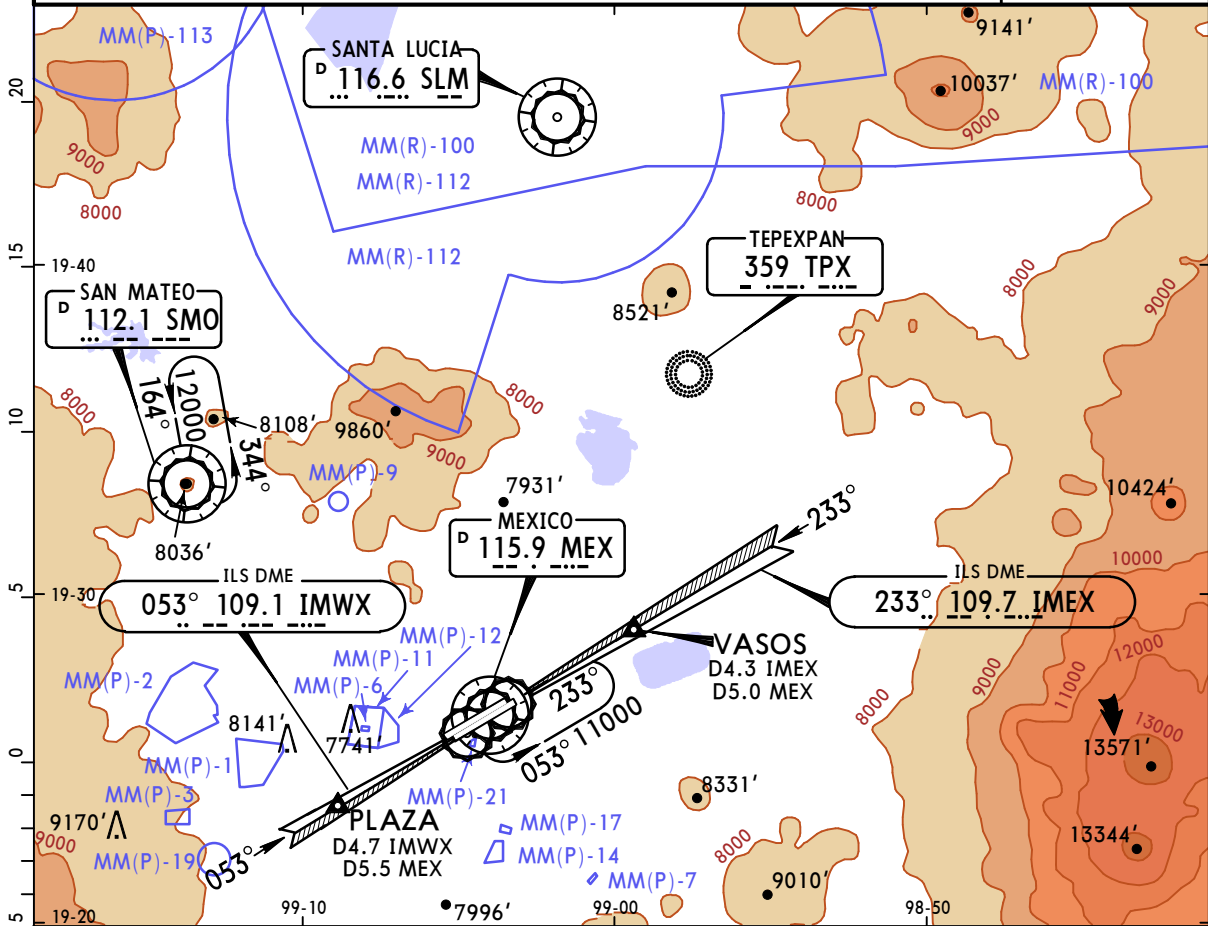
CHANGES: Ground control.

MMM/MEX
BENITO JUAREZ INTL

22 MAY 15 (18-1)

MEXICO CITY, MEXICO
RADAR All Rws

BRIEFING STRIP™	D-ATIS	MEXICO Terminal (R) (APP)	MEXICO Approach (R)	MEXICO Tower	Ground				
	127.65	129.6	121.2	119.75	118.55	118.7	121.85	121.0	122.8
RADAR		Final Apch Crs By ATC	Minimum Alt No FAF	MDA(H) Refer to Minimums	Apt Elev 7316'				
Missed Approach-See below							MSA MEX VOR		
Alt Set: IN (MB on req)			Trans level: FL 195		Trans alt: 18500'				



MISSED APPROACH:

Runways 05L/R: Climb outbound on MEX VOR R-053 to D9.0 MEX, then turn LEFT and intercept inbound SLM VOR R-140 to SLM VOR, join holding in accordance with ATC instructions.

Runways 23L/R: Climb on MEX VOR R-233 to D5.5 MEX, then turn RIGHT and intercept R-160 to D3.0 SMO, then turn RIGHT and intercept SLM VOR R-219 to join holding in accordance with ATC instructions.

LOST COMMUNICATIONS: If transmission has not been received for more than 1 minute during vectors to final approach or for more than 30 seconds on final approach complete a visual approach. If a visual approach is not possible, proceed direct to MEX VOR at last assigned altitude or climb to 11000', establish yourself in the holding pattern at MEX VOR and try communicating with ATC, using other frequencies if necessary.

Lighting -
Refer to
Airport
Chart

	STRAIGHT-IN LANDING				Max Kts	CIRCLE-TO-LAND MDA(H)
	ASR 05L MDA(H) 7900'(584')	ASR 05R MDA(H) 7900'(584')	ASR 23L MDA(H) 7900'(584')	ASR 23R MDA(H) 7900'(584')		
	ALS out	ALS out	ALS out	ALS out		
A	1	1	1	1	90	7960'(644') - 1
B					120	
C	1½	1½	1½	1½	140	7960'(644') - 1¾
D	1¾	1¾	1¾	1¾	165	7960'(644') - 2

CHANGES: Ground control.